

- ✦ **Sexual Assault Advocate:** A trained advocate will be present to support victims of sexual assault through the examination, court proceedings, and further recovery.
- ✦ **Oars:** A collaborative program between SRS and the Safehouse to help women with children, receiving or applying for SRS benefits, reach their goals of safety and self-sufficiency.
- ✦ **Support Group:** A support group where survivors can share their experiences with others who have been in a similar situation. Sharing ideas helps you to move forward to a healthier, happier life. Group meets every Tuesday at 6:30, and a free, informal meal is served at 5:30. Please call ahead so we can prepare enough food and provide a babysitter if needed.
- ✦ **Kid Safe:** An afterschool support group for children ages 9-18 years. This group is for those who have witnessed or experienced abuse, including domestic violence, sexual abuse, or dating violence. Some of the topics discussed will be dealing with conflict without violence, healthy versus unhealthy relationships and safety planning.
- ✦ **Financial Management Classes:** This class is designed to help women build financially independent lives. Personal finances and community resources are discussed. This class meets once a week every Thursday for 5 weeks. Call for start dates.
- ✦ **Community Education:** We offer programs to educate community groups, schools, churches, medical and health care providers about domestic & sexual violence. Programs are free of charge.

321-7491 or 1-800-870-6967

ALL SERVICES FREE AND CONFIDENTIAL!

Family Life Center



Domestic Violence
"Safehouse"

316-321-7104

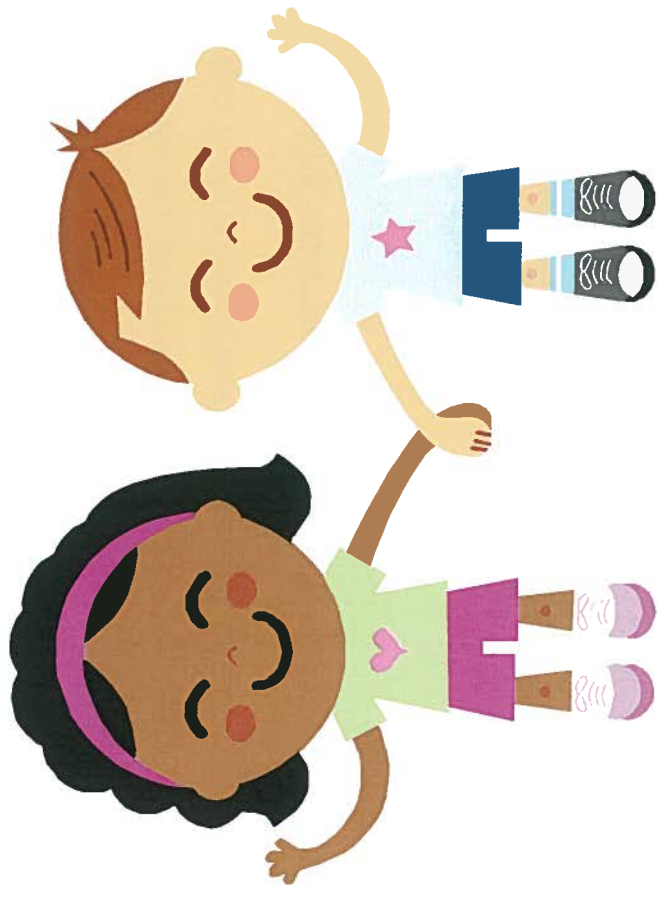
"Help Is Just A Phone Call Away..."

- ✦ **Shelter:** The Family Life Center provides a safe and confidential shelter for victims of domestic violence and their children.
- ✦ **24 Hour Hotline:** 1-316-321-7104 or 1-800-870-6967
- ✦ **Client Advocacy:** An advocate can provide clients with information on housing, job searches, and educational programs in the community. Referrals for basic needs can also be offered to domestic violence survivors.
- ✦ **Court Advocate:** A trained advocate can assist domestic violence victims in both District and Municipal court. The advocate can walk you through the court process, help with filing paperwork for "PFA" or "PFS" protection orders, assist with Crime Victim's Compensation, and safety planning. Sometimes all that is needed is the advocate to accompany the client to court.
- ✦ **Police Response Advocate:** An advocate is called on when the police respond to a domestic violence situation. After the abuser has been taken into custody, the advocate will help the victim with resources and coping with their trauma during their emergency situation.

KIDSAFE

Every Thursday

3:30 pm - 5:00 pm



Please Call

316-321-7104

or

1-800-870-6967

“Bridging the gap between child
victimization and expected adulthood
behaviors.”

About the program

KIDSAFE services are open to not only children residing in the shelter, or children who have previously resided in the shelter, but to children in the community who have been victimized by domestic violence, child abuse, or sexual assault.

Kidsafe is a program designed to help youth who have experienced some sort of abuse.

1. Dating violence
2. Abuse
3. Sexual Abuse
4. Domestic violence in household

The project will allow children to express their experiences while instructing them in prevention strategies such as conflict resolution, problem solving, and anger management.

The program will be conducted in a group setting allowing children to speak their minds in a “safe environment.”

“Safe” environment

The program will be conducted in a safe environment meaning everything that is talked about in the group will remain confidential.

The rules will be laid out by the children themselves and will be reviewed at the beginning of every group.

At the beginning of every group the children will stand in a circle and make a pact to themselves and others that what is said in the group will remain with the group.

An initial intake needs to be completed by a parent or guardian before the child can begin attending group.

Family Life Center of Butler County

Fact Sheet

2008

Sheltered:

Women – 63
Children – 51
Court Advocate – 159
Police Response Advocate – 18

Hotline calls – 884
Caller is the victim – 186
Domestic Violence calls – 220
Sexual Assault calls – 23

2009

Sheltered:

Women – 48
Children – 46
Court Advocate – 155
Police Response Advocate – 7

Hotline calls – 1021
Caller is the victim – 221
Domestic Violence calls – 312
Sexual Assault calls – 24

2010

Sheltered:

Women – 46
Children – 39
Court Advocate – 251
Outreach - 125

Hotline calls - 813
Caller is the victim - 240
Domestic Violence calls - 329
Sexual Assault calls - 26

2011 – January thru July

Sheltered:

Women – 37
Children – 46
Court Advocate – PFA: 118; PFS: 33
Outreach – 73

Hotline calls - 706
Caller is victim – 248
Domestic Violence calls - 320
Sexual Assault - 29

The Court Advocate accompanies victims to court when filing Protection from Abuse and Protection from Stalking orders. She also attends municipal court when domestic violence cases are being heard and gives the victim information on the shelter, safety planning, and on our support group meetings.

The Police Response Advocate goes out on domestic violence and sexual assault calls after law enforcement has assess the scene and the abuser has been removed from the situation. She talks to the victim and sees what kind of help they need whether it's going into shelter, protection order or information on the Family Life Center's services.